

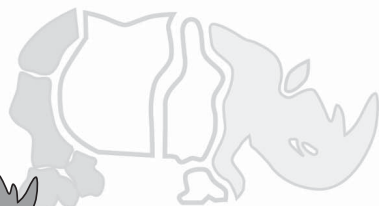
®

SOFIMA

SOFIMA



FILTERS
HYDRAULIC



FILTERS
HYDRAULIC

AMF 1,200 kPa (12 bar)

旋装式过滤器

SPIN-ON FILTERS

WECHSELPATRONEN - FILTER (Spin-on)

FILTERS SPIN-ON

FILTRI AVVITA BILI (Spin-on)



C AMF 系列旋装式管路吸油与回油过滤器

AMF 系列专为过滤液压油及润滑油而设计，用于动力设备、离线系统、农业及建筑设备。滤芯更换快捷方便。

接口尺寸：3/4" - 1 1/4" - 1 1/2" BSP-NPT 及 SAE 3000 法兰 流量：7~375 L/min

技术参数：

最大工作压力：1200 kPa (12 bar)

最大测试压力：1500 kPa (15 bar)

破裂压力：2500 kPa (25 bar)

疲劳测试：0~1200 kPa (12 bar) / 100000 周期

滤头：压铸铝

旁通阀：内置于滤头

工作温度：-25~+110°C

滤芯：

玻纤：3μ - 6μ - 12μ - 25μ

滤纸：10μ - 25μ

金属丝网：60μ - 125μ

按客户要求定制

滤芯破裂压力：

标准：Δp 400 kPa (4 bar)

密封件：标准：丁腈橡胶 按客户要求：氟橡胶

所有测试均按下列 ISO 标准执行：ISO2941：滤芯抗破裂试验；ISO2942：产品结构完整性试验；ISO2943：材料与滤液相容性试验；ISO3723：端向载荷试验；ISO3724：流动疲劳试验；ISO3968：压降 / 流量特性试验；ISO16889：多次通过试验。欲知更多信息，请联系我方技术部门。

GB Inline, suction and return spin-on filters - AMF series -

DESCRIPTION: AMF series filters are especially designed for the filtration of hydraulic fluids and lubricating oils on power units, off-line systems, agricultural and construction equipment. Quick and easy element replacement.

Port sizes: 3/4" - 1 1/4" - 1 1/2" BSP - NPT and SAE 3000 flange - Flow rates: 7 ÷ 375 L/min

TECHNICAL DATA

Max. working pressure: 1.200 kPa (12 bar)

Max. test pressure: 1.500 kPa (15 bar)

Burst pressure: 2.500 kPa (25 bar)

Fatigue test: 0 ÷ 1.200 kPa (12 bar) / 100.000 cycles

Head: die cast aluminium

By pass valve: when fitted, is into the filter head

Working temperature: -25 ÷ +110°C

FILTER ELEMENTS

Inorganic fibres: 3μ - 6μ - 12μ - 25μ Abs.

Special paper: 10μ - 25μ

Steel wire mesh: 60μ - 125μ

Special execution on request.

FILTER ELEMENTS COLLAPSE PRESSURES

Standard: Δp 400 kPa (4 bar)

SEALS Standard: Buna-N - On request: Viton

All tests performed according to the following standards: ISO 2941: Element collapse resistance test - ISO 2942: Production integrity test - ISO 2943: Fluids compatibility - ISO 3723: End load test method - ISO 3724: Flow fatigue resistance method - ISO 3968: Pressure drop versus flow rate - ISO 16889: Multipass test. For further information contact our Technical Dept.

D Leitungs-, Saug- und Rücklauf - Anschraubfilter - AMF Serie -

KURZBESCHREIBUNG: Die Filter der Serie AMF eignen sich besonders zum Filtern von hydraulischen Flüssigkeiten und Schmierölen bei Antrieben jeglicher Art, offenen Kreislauf-Systemen, Land- und Baumaschinen. Die Elemente sind schnell und einfach austauschbar. Anschlüsse: 3/4"-1 1/4"-1 1/2" BSP-NPT und SAE 3000 Flansch - Nennvolumenstrom: 7 ÷ 375 L/min

TECHNISCHE DATEN

Max. Betriebsdruck: 1.200 kPa (12 bar)

Max. Prüfdruck: 1.500 kPa (15 bar)

Min. Berstdruck: 2.500 kPa (25 bar)

Dauerversuch: 0 ÷ 1.200 kPa (12 bar) / 100.000 Zyklen

Kopf: Aluminium

Bypass - Ventil: auf Wunsch

Betriebstemperatur: -25 ÷ +110°C

FILTERELEMENTE

Anorganische Fasern: 3μ - 6μ - 12μ - 25μ Abs.

Spezial Papier: 10μ - 25μ

Metallsieb: 60μ - 125μ

Sonderausführungen auf Wunsch.

KOLLAPSDRÜCKE DES FILTERELEMENTS

Standard: Δp 400 kPa (4 bar)

DICHTUNGEN Standard: Buna-N - Auf Wunsch: Viton

Alle Proben wurden nach folgenden Normen durchgeführt: ISO 2941: Kollaps-Berstdruckprüfung - ISO 2942: Feststellung der einwandfreien Fertigungsqualität - ISO 2943: Prüfung der Verträglichkeit mit der Druckflüssigkeit - ISO 3723: Verfahren zur Prüfung der Endscheibenbelastung - ISO 3724: Nachweis der Durchfluss-Ermüdungseigenschaften - ISO 3968: Durchflusswiderstand gegen Volumenstrom - ISO 16889: Multipass test

F Filtres spin-on pour montage pression, retour, aspiration - série AMF -

DESCRIPTION: Les filtres de la série AMF sont prévus pour être utilisés sur des systèmes hydrauliques ou de lubrification Montage sur centrales de puissance fixes ou mobiles, système off-line, agriculture, industrie.

Raccordements: 3/4" - 1 1/4" - 1 1/2" BSP - NPT et bride SAE 3000 **Débits:** 7 ÷ 375 L/min

INFORMATIONS TECHNIQUES

Pression max. de service: 1.200 kPa (12 bar)

Pression max. d'essai: 1.500 kPa (15 bar)

Pression d'éclatement: 2.500 kPa (25 bar)

Essai de fatigue: 0 ÷ 1.200 kPa (12 bar) / 100.000 cycles

Tête du filtre: fonte d'aluminium

Valve de by-pass: sur demande et montés dans la tête filtre

Temperature de travaille: -25 ÷ +110°C

ELEMENTS FILTRANTS

Fibres inorganiques: 3μ - 6μ - 12μ - 25μ Abs.

Papier special: 10μ - 25μ

Treillis metal: 60μ - 125μ

Production special sur demande.

PRESSION D'ECRASUREMENT ELEMENTS FILTRANTS

Standard: Δp 400 kPa (4 bar)

JOINTS Standard: Buna-N - Sur demande: Viton

Tous les tests sont réalisés selon les standards suivant: ISO 2941: Test de pression d'écrasement élément filtrant - ISO 2942: Conformité aux détails de production - ISO 2943: Compatibilité media/fluids - ISO 3723: Détermination résistance à la déformation axiale - ISO 3724: Détermination résistance selon variation du débit - ISO 3968: Détermination des pertes de charge selon le débit - ISO 16889: Test Multipass.

I Filtri spin-on per montaggio in linea, aspirazione e ritorno - serie AMF -

DESCRIZIONE: I filtri della serie AMF sono utilizzabili sia in impianti oleodinamici che in impianti di lubrificazione.

Applicabili su centrali di potenza fisse o mobili, sistemi off-line, macchine agricole, movimento terra e industriali.

Attacchi: 3/4" - 1 1/4" - 1 1/2" BSP - NPT e flange SAE 3000 **Portate:** 7 ÷ 375 L/min

CARATTERISTICHE TECNICHE

Pressione max. di esercizio: 1.200 kPa (12 bar)

Pressione max. di collaudo: 1.500 kPa (15 bar)

Pressione di scoppio: 2.500 kPa (25 bar)

Test di fatica: 0 ÷ 1.200 kPa (12 bar) / 100.000 cicli

Testata: fusione di alluminio

Valvola di by-pass: se richiesta è montata nella testata filtro

Temperatura di lavoro: -25 ÷ +110°C

ELEMENTI FILTRANTI

Fibra inorganica: 3μ - 6μ - 12μ - 25μ Abs.

Carta speciale: 10μ - 25μ

Tela metallica: 60μ - 125μ

Esecuzioni speciali su richiesta.

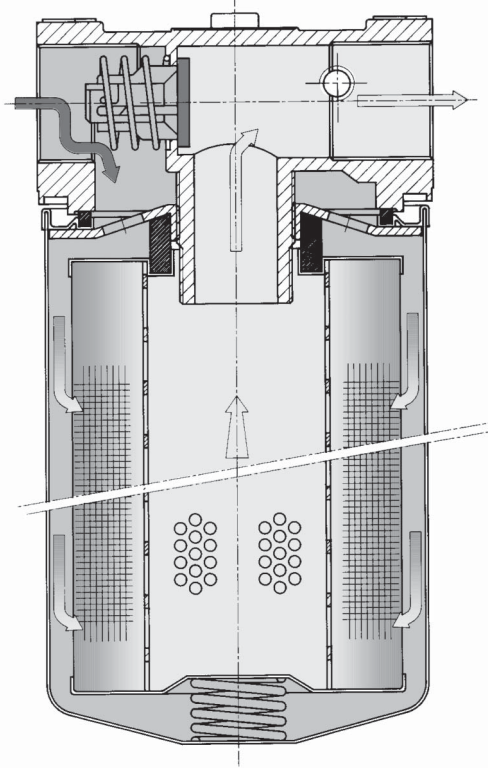
PRESSIONE COLLASSO CARTUCCE FILTRANTI

Standard: Δp 400 kPa (4 bar)

GUARNIZIONI Standard: Buna-N - A richiesta: Viton

Tutti i test sono stati eseguiti secondo le seguenti norme: ISO 2941: Test verifica pressione collasso cartuccia - ISO 2942: Test verifica di conformità di fabbricazione - ISO 2943: Test verifica compatibilità materiali con fluidi - ISO 3723: Test per resistenza alla deformazione assiale - ISO 3724: Test determinazione resistenza alla fatica - ISO 3968: Test perdite di carico in funzione della portata - ISO 16889: Prova Multipass

安装原理
INSTALLATION DETAILS
EINBAUSYSTEME
SISTEMA DI MONTAGGIO



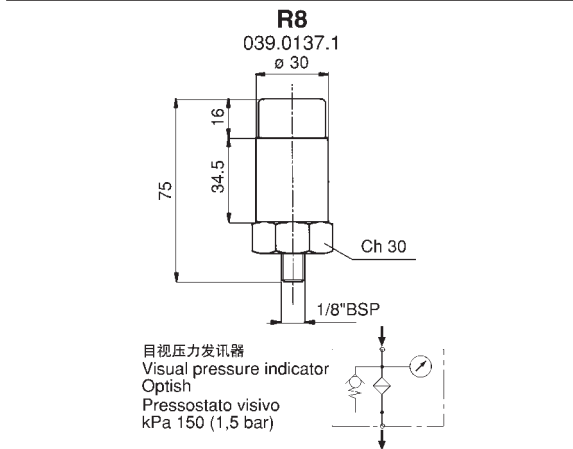
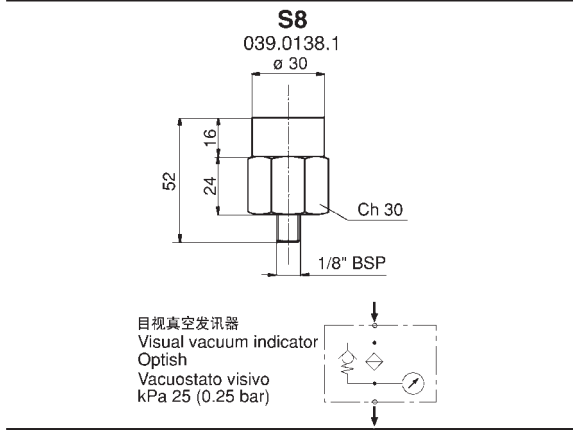
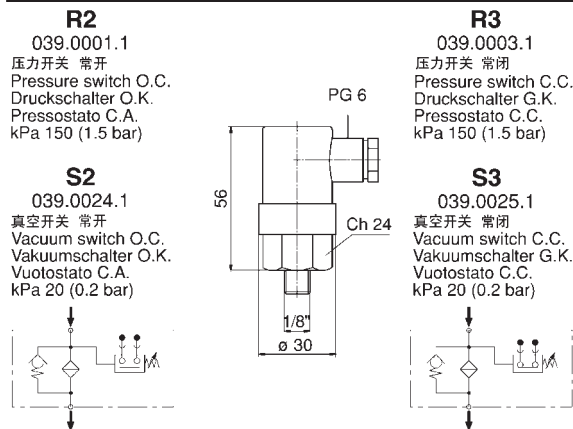
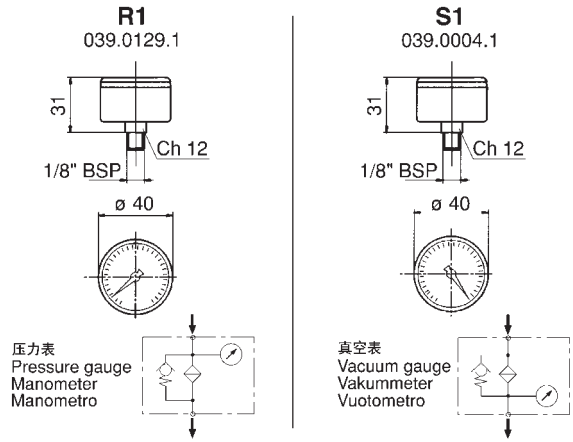
AMF 15 / 30

接口尺寸: 3/4" - 1 1/4"
 Port sizes: 3/4" - 1 1/4"
 Anschlüsse: 3/4" - 1 1/4"
 Attacchi: 3/4" - 1 1/4"

BSP - NPT

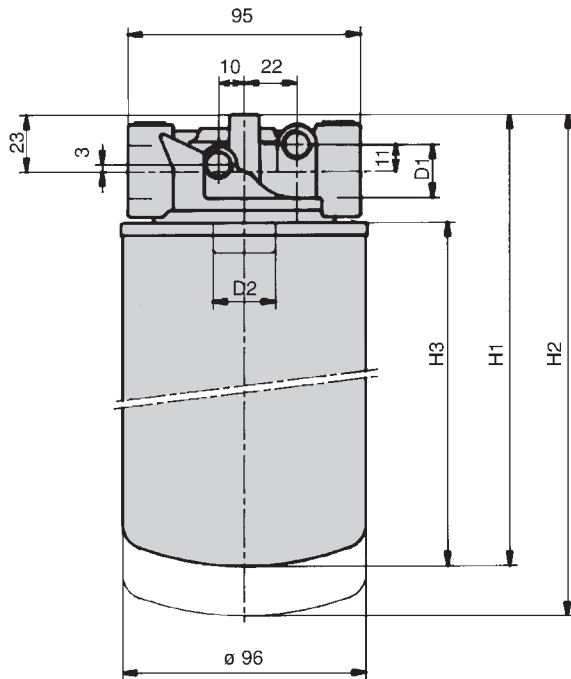
流量: 7 ~ 205
 Flow rates: 7 ~ 205
 Nennvolumenstrom: 7 ~ 205
 Portate: 7 ~ 205
 (L/min)

堵塞指示器
CLOGGING INDICATORS
VERSCHMUTZUNGSANZEIGER
INDICATORI DI INTASAMENTO

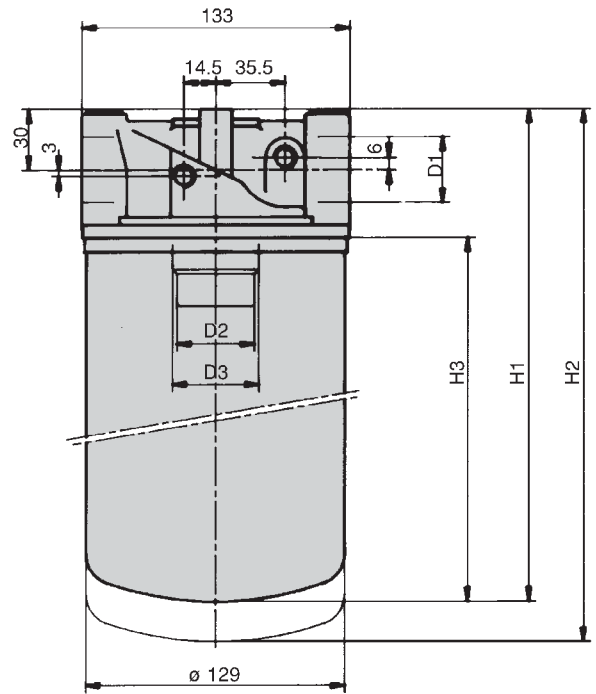


外廓尺寸
DIMENSIONAL LAYOUT

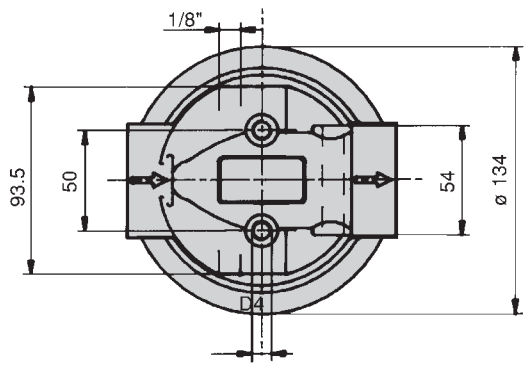
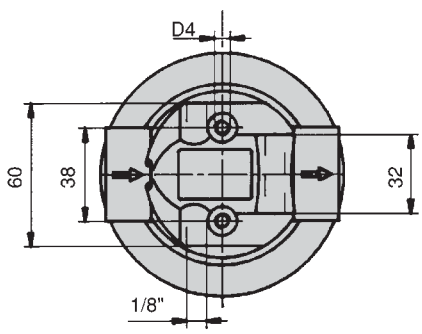
TECHNISCHE MASSDATEN
DATI TECNICI DIMENSIONALI



AMF 15

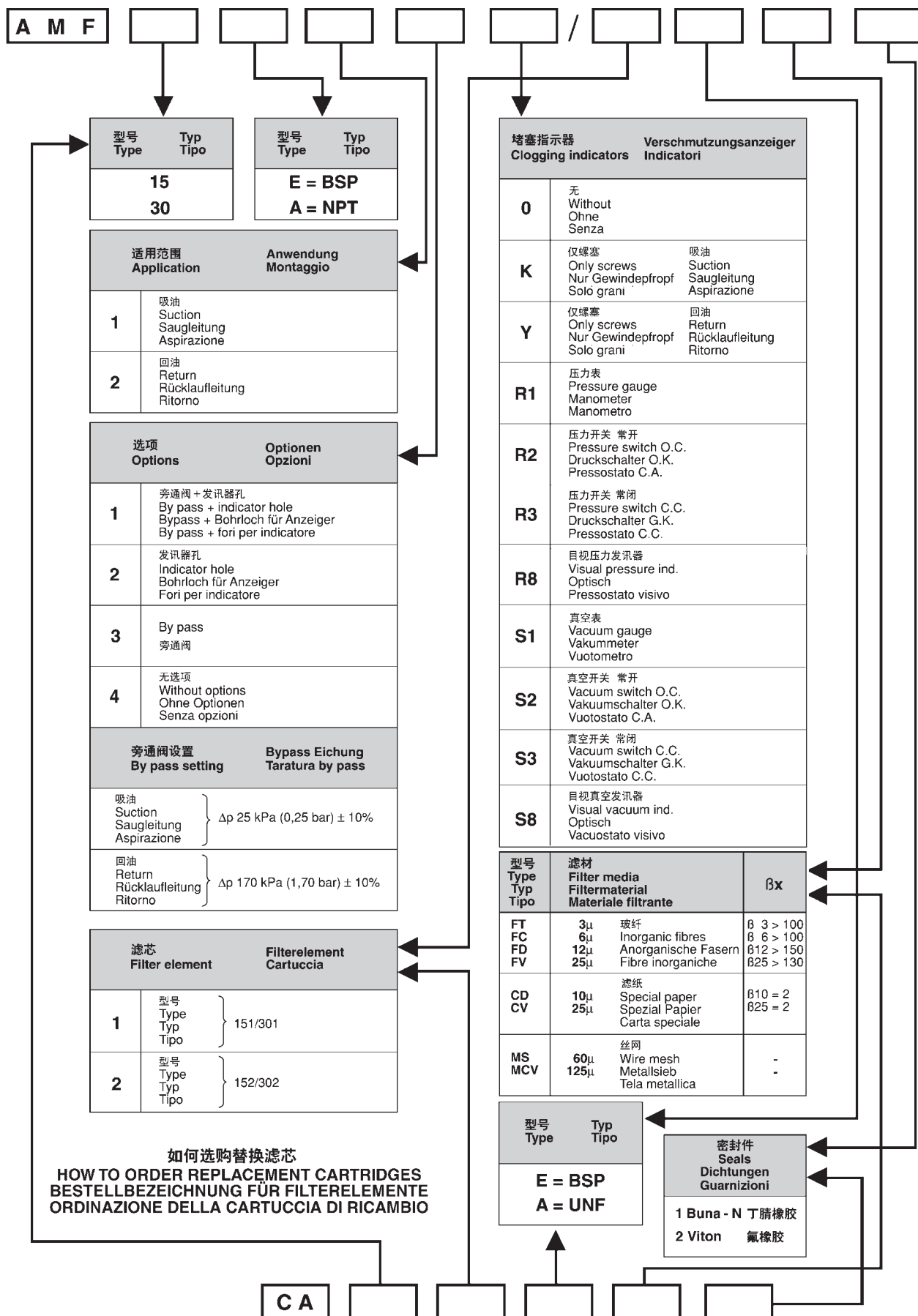


AMF 30

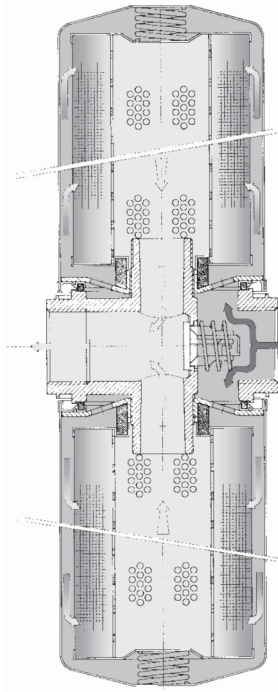


型号 Type	Typ Tipo	D1	D2	D3	D4	H1	H2	H3	Kg	
AMF 15 E ... /1E	3/4" BSP	3/4" BSP	-	-	M8	188	208	145	0.8	
AMF 15 E ... /2E						234	254	191	0.9	
AMF 15 A ... /1A	3/4"NPT	1" 12 UNF	-	-	1/4"UNC	188	208	145	0.8	
AMF 15 A ... /2A						234	254	191	0.9	
AMF 30 E ... /1E	1 1/4"BSP	1 1/2" 16 - UNF	1 1/4"BSP	-	M8	248	278	181	1.8	
AMF 30 E ... /2E						293	323	226	1.9	
AMF 30 A ... /1A	1 1/4"NPT			-	-	5/16"UNC	241	271	175	1.95
AMF 30 A ... /2A							335	365	270	2.1

AMF 15 / 30

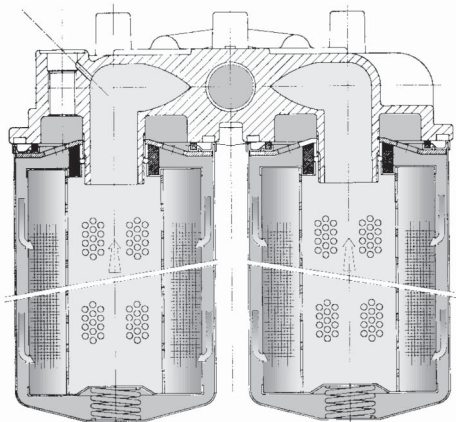


安装原理
INSTALLATION DETAILS
EINBAUSYSTEME
SISTEMA DI MONTAGGIO



AMF 60

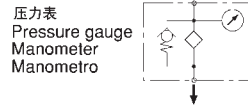
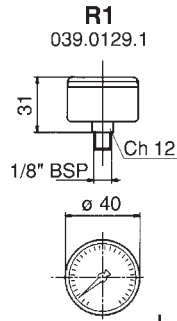
接口尺寸 **1 1/2"** 流量 **48 ~ 375**
 Port sizes: **1 1/2"** Flow rates: **48 ~ 375**
 Anschlüsse: **1 1/2"** Nennvolumenstrom: **48 ~ 375**
 Attacchi: **1 1/2"** Portate: **48 ~ 375**
BSP - NPT (L/min)



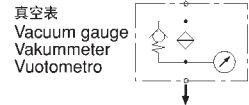
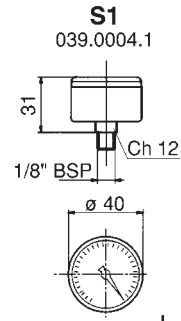
AMF 80

接口尺寸 **BSP - NPT - SAE 3000**
 Port sizes: **BSP - NPT - SAE 3000**
 Anschlüsse: **BSP - NPT - SAE 3000**
 Attacchi: **BSP - NPT - SAE 3000**
 流量 **48 ~ 375**
 Flow rates: **48 ~ 375**
 Nennvolumenstrom: **48 ~ 375**
 Portate: **48 ~ 375**
(L/min)

堵塞指示器
CLOGGING INDICATORS
VERSCHMUTZUNGSANZEIGER
INDICATORI DI INTASAMENTO



压力表
 Pressure gauge
 Manometer
 Manometro



真空表
 Vacuum gauge
 Vakuummeter
 Vuotometro



压力开关 常开
 Pressure switch O.C.
 Druckschalter O.K.
 Pressostato C.A.
 kPa 150 (1.5 bar)



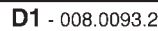
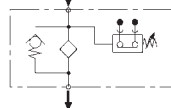
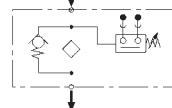
压力开关 常闭
 Pressure switch C.C.
 Druckschalter G.K.
 Pressostato C.C.
 kPa 150 (1.5 bar)



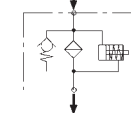
真空开关 常开
 Vacuum switch O.C.
 Vakuumschalter O.K.
 Vuotostato C.A.
 kPa 20 (0.2 bar)



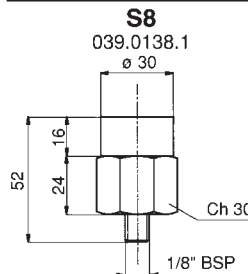
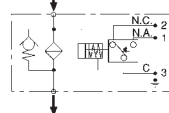
真空开关 常闭
 Vacuum switch C.C.
 Vakuumschalter G.K.
 Vuotostato C.C.
 kPa 20 (0.2 bar)



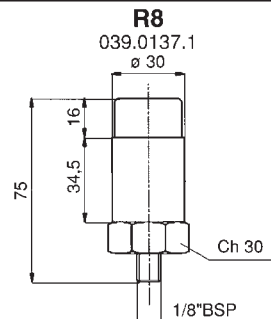
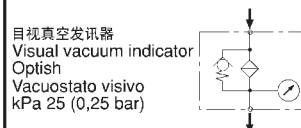
目视压差发讯器
 Visual differential
 Optisch
 Differenziale visivo
 kPa 150 (1.5 bar)



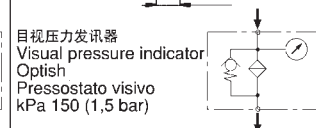
目电式发讯器
 Visual and electrical
 Optisch und Elektrisch
 Visivo e elettrico
 kPa 150 (1.5 bar) - DIN 43650 - IP 65



目视真空发讯器
 Visual vacuum indicator
 Optisch
 Vacuostato visivo
 kPa 25 (0,25 bar)

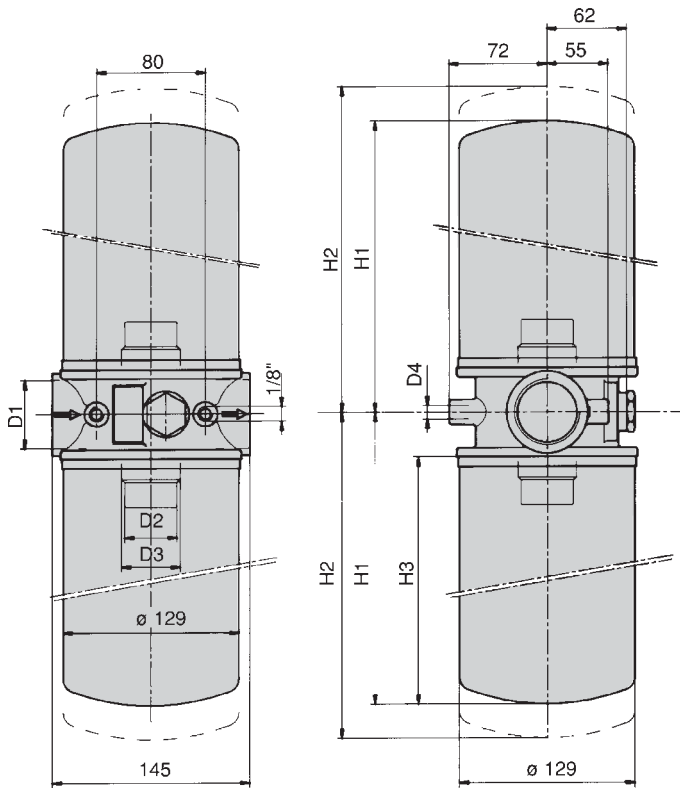


目视压力发讯器
 Visual pressure indicator
 Optisch
 Pressostato visivo
 kPa 150 (1,5 bar)

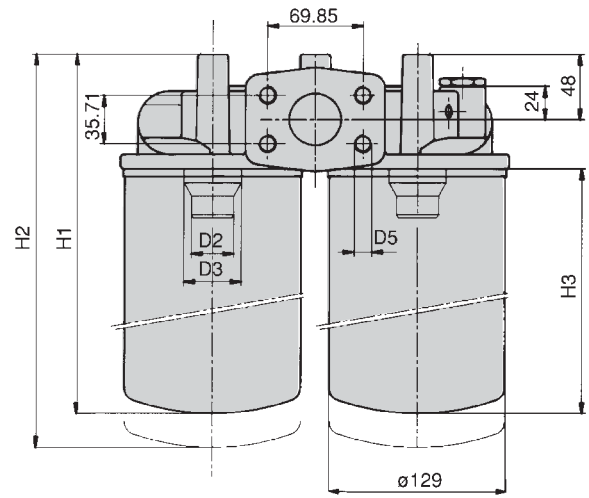


外廓尺寸
DIMENSIONAL LAYOUT

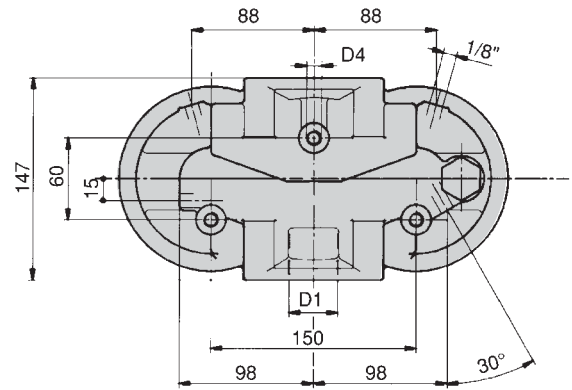
TECHNISCHE MASSDATEN
DATI TECNICI DIMENSIONALI



AMF 60

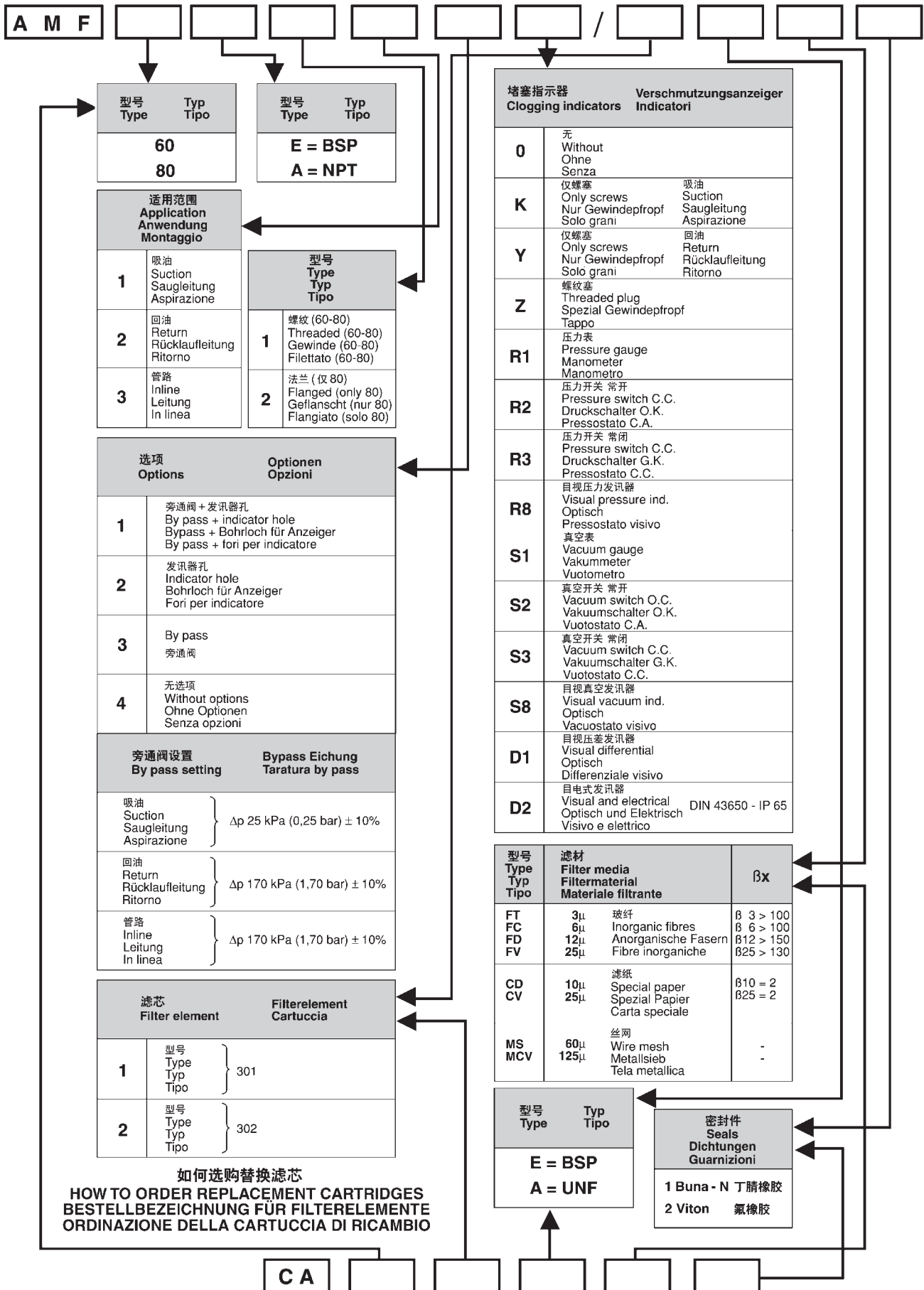


AMF 80



型号 Type	Typ Tipo	D1	D2	D3	D4	D5	H1	H2	H3	Kg
AMF 60 E .../1E		1 1/2" BSP	1 1/2" 16 - UN	1 1/4" BSP	M10	-	216	246	181	3.4
AMF 60 E .../2E							261	291	226	3.8
AMF 60 A .../1A	1 1/2" NPT	3/8" UNC			-	209	239	175	3.5	
AMF 60 A .../2A							305	335	270	4.2
AMF 80 E1 .../1E		1 1/2" BSP	1 1/4" BSP	1 1/2" 16 - UN	M10	-	269	299	181	4.7
AMF 80 E1 .../2E							314	344	226	5.1
AMF 80 E2 .../1E	1 1/2" SAE 3000	-			M12	269	299	181	4.7	
AMF 80 E2 .../2E							314	344	226	5.1
AMF 80 A1 .../1A	1 1/2" NPT	3/8" UNC			-	262	292	175	4.75	
AMF 80 A1 .../2A							357	387	270	5.4
AMF 80 A2 .../1A	1 1/2" SAE 3000	-			1/2" UNC	262	292	175	4.75	
AMF 80 A2 .../2A							357	387	270	5.4

AMF 60 / 80



型号 Type	Typ Tipo	型号 Type	Typ Tipo
60		E = BSP	
80		A = NPT	

适用范围 Application Anwendung Montaggio		型号 Type Typ Tipo	
1	吸油 Suction Saugleitung Aspirazione	1	螺纹 (60-80) Threaded (60-80) Gewinde (60-80) Filettato (60-80)
2	回油 Return Rücklaufleitung Ritorno	2	法兰 (仅 80) Flanged (only 80) Geflanscht (nur 80) Flangiato (solo 80)
3	管路 Inline Leitung In linea		

选项 Options		Optionen Opzioni	
1	旁通阀 + 发讯器孔 By pass + indicator hole Bypass + Bohrloch für Anzeiger By pass + fori per indicatore		
2	发讯器孔 Indicator hole Bohrloch für Anzeiger Fori per indicatore		
3	By pass 旁通阀		
4	无选项 Without options Ohne Optionen Senza opzioni		

旁通阀设置 By pass setting		Bypass Eichung Taratura by pass	
吸油 Suction Saugleitung Aspirazione	} Δp 25 kPa (0,25 bar) \pm 10%	回油 Return Rücklaufleitung Ritorno	} Δp 170 kPa (1,70 bar) \pm 10%
管路 Inline Leitung In linea		} Δp 170 kPa (1,70 bar) \pm 10%	

滤芯 Filter element		Filterelement Cartuccia	
1	型号 Type Typ Tipo	} 301	
2	型号 Type Typ Tipo		} 302

如何选购替换滤芯
BESTELLBEZEICHNUNG FÜR FILTERELEMENTE
ORDINAZIONE DELLA CARTUCCIA DI RICAMBIO

堵塞指示器 Clogging indicators		Verschmutzungsanzeiger Indicatori	
0	无 Without Ohne Senza		
K	仅螺塞 Only screws Nur Gewindepfropf Solo grani	吸油 Suction Saugleitung Aspirazione	
Y	仅螺塞 Only screws Nur Gewindepfropf Solo grani	回油 Return Rücklaufleitung Ritorno	
Z	螺纹塞 Threaded plug Spezial Gewindepfropf Tappo		
R1	压力表 Pressure gauge Manometer Manometro		
R2	压力开关 常开 Pressure switch C.C. Druckschalter O.K. Pressostato C.A.		
R3	压力开关 常闭 Pressure switch C.C. Druckschalter G.K. Pressostato C.C.		
R8	目视压力发讯器 Visual pressure ind. Optisch Pressostato visivo		
S1	真空表 Vacuum gauge Vakuummeter Vuotometro		
S2	真空开关 常开 Vacuum switch O.C. Vakuumschalter O.K. Vuotostato C.A.		
S3	真空开关 常闭 Vacuum switch C.C. Vakuumschalter G.K. Vuotostato C.C.		
S8	目视真空发讯器 Visual vacuum ind. Optisch Vacuostato visivo		
D1	目视压差发讯器 Visual differential Optisch Differenziale visivo		
D2	目视电发讯器 Visual and electrical Optisch und Elektrisch Visivo e elettrico		DIN 43650 - IP 65

型号 Type Typ Tipo	滤材 Filter media Filtermaterial Materiale filtrante	β_x
FT	3 μ 玻纤	$\beta_3 > 100$
FC	6 μ Inorganic fibres	$\beta_6 > 100$
FD	12 μ Anorganische Fasern	$\beta_{12} > 150$
FV	25 μ Fibre inorganiche	$\beta_{25} > 130$
CD	10 μ 滤纸	$\beta_{10} = 2$
CV	25 μ Spezial Papier Carta speciale	$\beta_{25} = 2$
MS	60 μ 丝网	-
MCV	125 μ Wire mesh Metallsieb Tela metallica	-

型号 Type	Typ Tipo	密封件 Seals Dichtungen Guarnizioni
E = BSP		1 Buna - N 丁腈橡胶
A = UNF		2 Viton 氟橡胶

流量
FLOW RATES

(L/min)

NENNVOLUMENSTROM
PORTATE

	型号 Type	Typ Tipo	FT	FC	FD	FV	CD	CV	MS	MCV
	吸油 SUCTION SAUGLEITUNG ASPIRAZIONE Δp 0.05 ÷ 0.10 bar	AMF15 ... /1		7	9	13	15	16	20	30
AMF15 ... /2			8	11	15	20	22	30	35	35
AMF30 ... /1			18	32	40	50	53	60	95	95
AMF30 ... /2			27	40	54	65	70	78	100	100
AMF60 ... /1			48	70	95	110	115	130	150	150
AMF60 ... /2			55	79	102	128	130	145	150	150
AMF80 ... /1			48	70	95	110	115	130	150	150
AMF80 ... /2			55	79	102	128	130	145	150	150
回油 RETURN RÜCKLAUFLEITUNG RITORNO Δp 0.4 ÷ 0.5 bar	AMF15 ... /1		30	35	48	65	68	73	80	80
	AMF15 ... /2		34	41	55	69	74	80	90	90
	AMF30 ... /1		87	102	118	125	130	170	190	190
	AMF30 ... /2		92	110	125	135	150	188	205	205
	AMF60 ... /1		190	242	270	280	290	325	360	360
	AMF60 ... /2		205	255	283	292	305	340	375	375
	AMF80 ... /1		190	242	270	280	290	325	360	360
	AMF80 ... /2		205	255	283	292	305	340	375	375

上述参考滤液的动力粘度为 30 cSt
密度为 0.86 kg/dm³

The reference fluid has a kinematic viscosity
of 30 cSt and a density of 0,86 Kg/dm³

Bezugsflüssigkeit mit kinematischer
Viskosität von 30 cSt und Dichte von 0,86 Kg/ dm³

Fluido di riferimento con viscosità cinematica di
30 cSt e densità di 0,86 Kg/ dm³

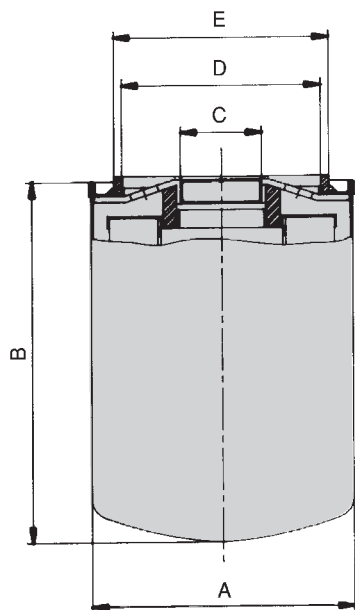
纳污容量 DIRT HOLDING CAPACITY AUFSPICHERUNGSFÄHIGKEIT CAPACITÀ D'ACCUMULO (g)ACFTD $\Delta p = 400$ kPa								过滤面积 FILTER AREA FILTERFLÄCHE SUPERFICIE FILTRANTE (cm ²)	
型号 Type	Typ Tipo	FT	FC	FD	FV	CD	CV	MS	MCV
AMF 15 E ... /1		10.7	15.0	17.1	26.1	23.4	37.0	980	980
AMF 15 A ... /1									
AMF 15 E ... /2		18.1	25.4	29.0	43.9	33.6	53.1	1390	1390
AMF 15 A ... /2									
AMF 30 E ... /1		22.2	31.1	35.6	54.2	39.4	62.2	1940	1940
AMF 30 A ... /1		19.8	27.8	31.7	48.3	35.2	55.5	1740	1740
AMF 30 E ... /2		29.4	41.2	46.8	71.8	52.2	82.4	2570	2570
AMF 30 A ... /2		35.2	49.3	56.3	85.8	62.5	98.5	3080	3080
AMF 60 E ... /1		44.4	62.2	71.2	108.4	78.8	124.4	3880	3880
AMF 60 A ... /1		39.6	55.6	63.4	96.6	70.4	111.0	3480	3480
AMF 60 E ... /2		58.8	82.4	93.6	143.6	104.4	164.8	5140	5140
AMF 60 A ... /2		70.4	98.6	112.6	171.6	125.0	197.0	6160	6160
AMF 80 E ... /1		44.4	62.2	71.2	108.4	78.8	124.4	3880	3880
AMF 80 A ... /1		39.6	55.6	63.4	96.6	70.4	111.0	3480	3480
AMF 80 E ... /2		58.8	82.4	93.6	143.6	104.4	164.8	5140	5140
AMF 80 A ... /2		70.4	98.6	112.6	171.6	125.0	197.0	6160	6160

过滤效率 (多次通过试验 ISO 4572)
CARTRIDGES FILTERING CAPACITY
FILTERUNGSFÄHIGKEIT
CAPACITA FILTRANTE CARTUCCE
(MULTIPASS TEST ISO 4572)

滤芯 Filter elements Filtermaterialien Elementi filtranti	Δp kPa	β 值 β_x Ratio			
		β_3	β_6	β_{12}	β_{25}
FT 3 μ	400	120	275	1045	>5000
FC 6 μ	400	38	120	330	>5000
FD 12 μ	400	7	30	165	640
FV 25 μ	400	1	2	6	138
CD 10 μ	400	1	1.5	2	5
CV 25 μ	400	1	1	1,5	2

滤芯尺寸

SPIN-ON ELEMENTS DIMENSIONAL LAYOUT
ELEMENTE TECHNISCHE MASSDATEN
DIMENSIONI CARTUCCE AVVITABILI

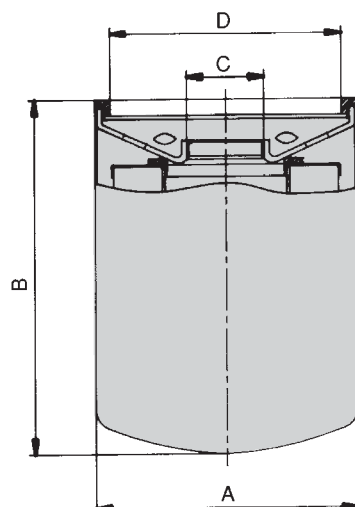


型号 Type	Typ Tipo	A	B	C	D	E	Kg
CA 151 E	95	95	145	3/4" BSP	62	72	0.6
CA 151 A				1" - 12UNF			
CA 152 E	95	95	191	3/4" BSP	62	72	0.7
CA 152 A				1" - 12UNF			
CA 301 E	129	129	181	1 1/4" BSP	98	108	1.15
CA 302 E			226				1.4

仅按客户要求定制
On request only

Nur mit Anfrage
Sur demande

CA 1505	95	90	3/4" BSP	62	72	0.4
---------	----	----	----------	----	----	-----



型号 Type	Typ Tipo	A	B	C	D	Kg
CA 301 A	129	129	175	1" 1/2 - 16UNF	112.5	1.2
CA 302 A			270			1.6